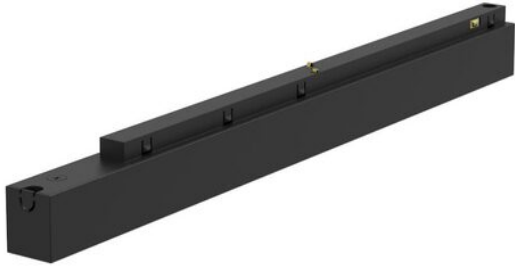


LV100W48VDC-M-A



Constant Voltage Driver

Model: LV100W48VDC-M-A

Fit the Stucchi MICRO 9600-1/ST1



Model	Item code	Rated Input Voltage	Input Current	PF	Output Power Range	Output Voltage	Output Current	Efficiency (typ.)
LV100W48VDC-M-A_B	139951	220-240VAC	≤0.6A	≥0.95	0-100.8W	48V	0-2.1A	90%
LV100W48VDC-M-A_W	139961	220-240VAC	≤0.6A	≥0.95	0-100.8W	48V	0-2.1A	90%

Test result @230V, 50Hz, Full Load.

1.Parameters

Category	Item	Technical Norm
Features	Output Type	Constant Voltage
	Output Feature	Isolation
	Insulation Class	Class II
	IP Grade	IP20
Input	Rated Input Voltage	220-240VAC
	Range of Input Voltage	176-264VAC
	Frequency	50/60Hz
	Input Current	≤0.6A (198VAC, full load)
	Input Power	≤115W (230VAC, full load)
	Power Factor	≥0.95 (230VAC, full load)
	THD	≤15% (230VAC, full load)
	Standby Power Consumption	≤0.5W @230VAC
	Inrush Current	≤60A/200us (230VAC, full-load)
	Connected quantity of 16A Breaker	16pcs/type B ; 26pcs/type C
Output	Output Voltage	48VDC ± 3%
	No Load Voltage	48VDC ± 3%
	Output Current	0 -2.1A
	Rated Output Power	100.8W
	Efficiency	≥90% (230VAC, full load)
	Started Delay Time	≤0.5S (220-240VAC)
	Output Ripple Voltage	<1% (220-240VAC, full load)
Protection	Short Circuit Protection	Auto Recovery
	Over Current Protection	110%~200%Io, Auto Recovery
	No-load Protection	<50V, Auto Recovery

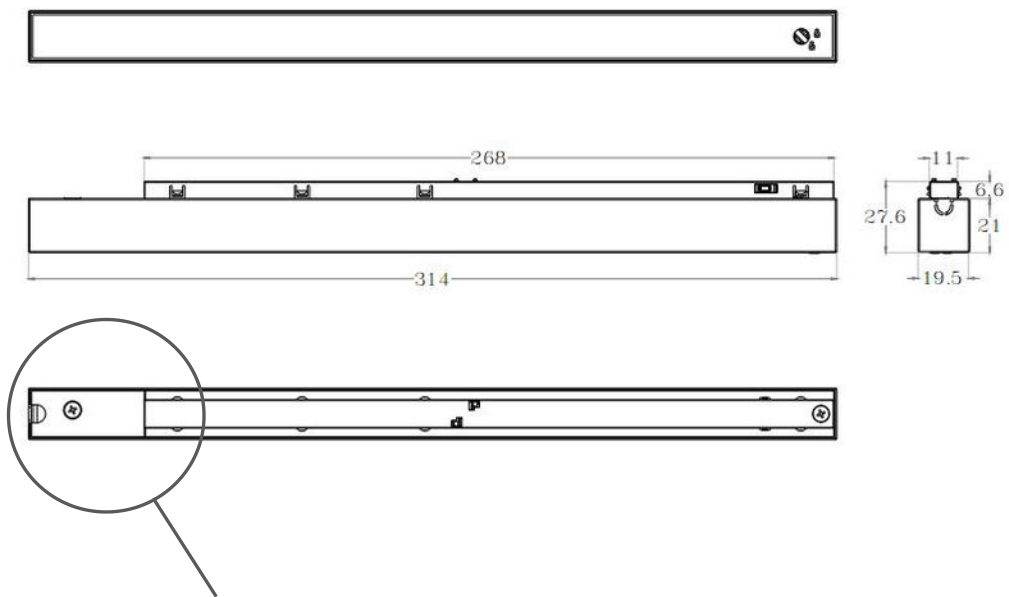
LV100W48VDC-M-A

	Insulation voltage	3.75KV/5mA/60S Primary to Secondary
	Insulation resistance	>100M ohm @ 500VDC
	Leakage current	I/P to O/P < 250 μ A
Environment	Ta/Operation Temperature	-25...+40°C
	Ts/Storage Temperature	-40...+85°C
	Tc/Enclosure Temperature	<85°C
	Humidity	5%....85%RH
	Atmosphere	86-108KPa
Construction	Connection Method	Direct Lead
	Installation	Built-in
	PRI Wire preparation	Preset: NA
		Optional 1:0.75mm ² *2, blue/brown
		Optional 2:0.75mm ² *2, blue/brown+0.3mm ² *2, Black/Yellow
	SEC Wire preparation	NA
Dimension	314X19.5X27.6mm (L*W*H)	
Standards	Certification	CE
	Safety Standards	EN61347-1:2015,EN61347-2-13:2014/A1:2017,EN62493:2015, GB19510.1, GB19510.14
	EMC Standards	EN55015:2013/A1:2015,EN61000-3-2:2014,EN61000-3-3:2013,EN61547:2009, GB 17743, GB 17625.1
	Performance	EN62384
	Surge	L-N/2KV
Others	Colour	White/Black
	RoHS	Conform to RoHS
	Life Time	50000h @40°C (Ta)
	Warranty	5 years, F.R. < 10% 100000 FR

Remark

1. All Parameters, if not specified, are measured at 230VAC/50Hz and 25°C ambient temperature.
2. LED Driver is a component of the luminaires, Luminaires and wire layout will affect the EMC, please check the EMC with end products again.
3. Safety warnings for products and installation
 KGP recommends the usage of an opto-insulated repeater dali compatible different modes:
 - 2 different power supplier (2 circuits,0-60V dc)
 - 1 circuit for 60V dc and 1 circuit for Data B

2.Dimension (Unit: mm)



Compatible Track

Stucchi MICRO 9600-1/B-ST1



9600-1/B-ST1

3.Label

 <small>LED DRIVER</small> <small>D+D- N L</small>	<small>KGP Electronics GmbH</small> <small>Hueckstraße 19</small> <small>DE-58511 Lüdenscheid</small>	For LED Modules Only LED Driver	Constant Voltage Type	 <small>D+</small> <small>D-</small>	INPUT: 220-240V~50/60Hz 0.52A OUTPUT: 48V --- Max.2100mA	Power Factor(λ): ≥0.95 ta:45°C tc:75°C	
		LV100W48VDC-M-A_B 139951	Rated Power: Max.100W				
 <small>LED DRIVER</small> <small>D+D- N L</small>	<small>KGP Electronics GmbH</small> <small>Hueckstraße 19</small> <small>DE-58511 Lüdenscheid</small>	For LED Modules Only LED Driver	Constant Voltage Type	 <small>D+</small> <small>D-</small>	INPUT: 220-240V~50/60Hz 0.52A OUTPUT: 48V --- Max.2100mA	Power Factor(λ): ≥0.95 ta:45°C tc:75°C	
		LV100W48VDC-M-A_W 139961	Rated Power: Max.100W				

4.Packing information

Package	Model	Carton L*W*H(mm)	Pcs/ Ctn	Net weight/ pcs(kg)	Net weight/ ctn(kg)	Gross weight / ctn(kg)
With inner box and manual	LV100W48VDC-M-A	340*325*210	50	0.22	11	11.85

5.Ordering data

Model No	Item code
LV100W48VDC-M-A_B	139951
LV100W48VDC-M-A_W	139961

6.EVISION HISTORY

Date	Revision	Remark
2023-08-17	1.0V	Preliminary Edition
2023-09-08	2.0V	Modified dimension display
2024-03-18	3.0V	Modified Compatible Track
2024-03-23	4.0V	Modified Compatible Track
2025-08-25	5.0V	Add item code