

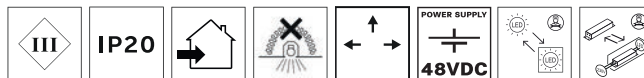


# INSTALLATION MANUAL

KarizmaLuce\_Installation\_Manual\_48V\_Q3-Q4\_Luminaires\_V01

KARIZMA luce

## 48V Q3-Q4 luminaires



Connect the luminaire to a constant current driver matching specified current and voltage. Direct connection to mains will damage the light source.



### IMPORTANT NOTICE

To ensure safety and correct operation, please follow these guidelines during installation and use. Compliance with these instructions is strongly recommended.

#### SAFETY WARNING

Before starting installation, or carrying out any maintenance, always disconnect the luminaire from the power supply.

Do not attempt to alter, or tamper with the product in any way. Unauthorised modifications may compromise safety and create hazardous situations.

Karizma Luce is not liable for any damages or risks resulting from modified products.

This product is intended exclusively for indoor use.

#### CARE & CLEANING TIPS

To clean the luminaire, gently wipe it with a soft cloth dampened with water.

For stubborn dirt, use a small amount of mild soap or detergent.

Do not use alcohol, solvents, or harsh chemicals, as these may damage the surface or components.

Dispose of luminaires separately from household waste in accordance with the WEEE Directive.



Warning - Follow safety instructions



Attention - important information, please read carefully



CE marking - complies with EU safety, health, and environmental requirements



Dispose separately from household waste in accordance with WEEE Directive

Scan me



For the latest version of the manual and available accessories check [www.karizmaluce.com](http://www.karizmaluce.com) or contact your sales representative.



# INSTALLATION MANUAL

KarizmaLuce\_Installation\_Manual\_48V\_Q3-Q4\_Luminaires\_V01


KARIZMA luce

## INSTALLATION OF LUMINAIRES

### PREPARATION:

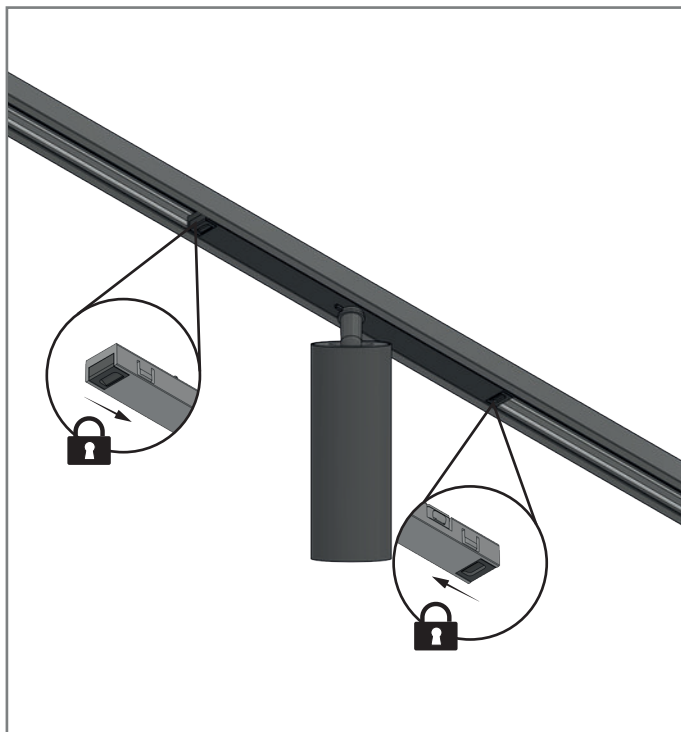
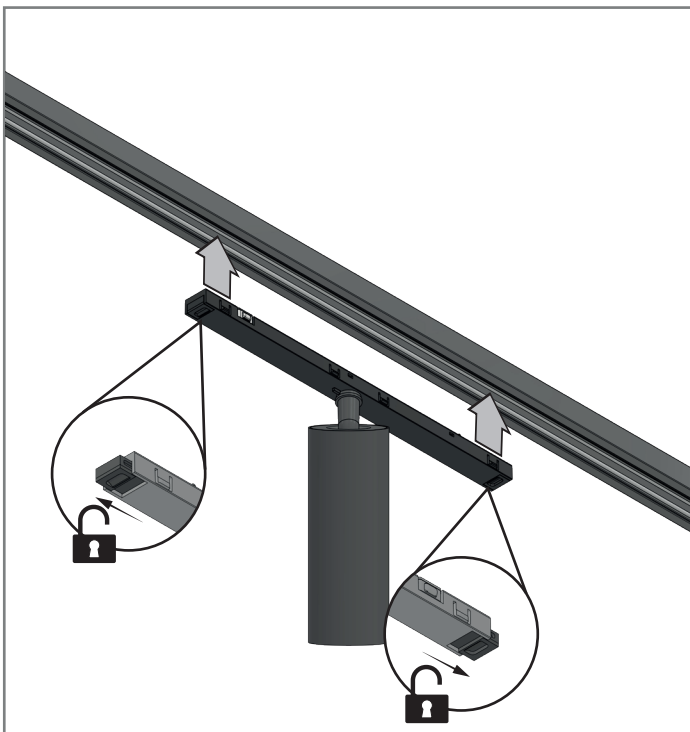
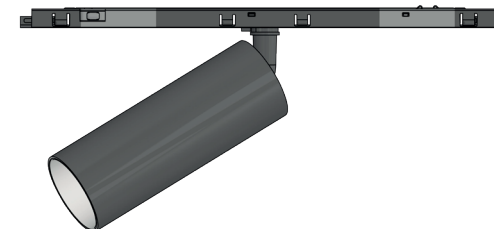
- Carefully read the manual before installation to guarantee the correct and safe operation of the luminaire.
- Ensure the usage of the correct 48V track. The luminaire must not be modified. Modifying the luminaire in any way invalidates the guarantee and may make the luminaire hazardous.
- Before connecting the 48V luminaire to the track, please make sure that the installed AC/DC converter is compatible. The number of 48V luminaires depend on the power provided by the AC/DC converter.
- Never cover the luminaire during use.
- Never use luminaires classified for indoor use in an outside environment, even if they are protected from the elements.
- The adapter of the Q-Line series 48V mini track system is orientation free.

### PLEASE NOTE: THE LUMINAIRE MUST BE INSTALLED BY QUALIFIED PERSONNEL!

 The following instructions are valid for all 48V mini track luminaires, the luminaire used serves for illustration purposes.



When installing the luminaire, hold it in the highlighted areas.




FOR REMOVAL OF LUMINAIRE, FOLLOW THE ABOVE INSTRUCTIONS IN REVERSE.



# INSTALLATION MANUAL

KarizmaLuce\_Installation\_Manual\_48V\_Q3-Q4\_Luminaires\_V01

KARIZMA luce

 The following instructions are only valid for the following models:

Juno XXS Q3

Juno XXS Q4

Juno XXS Duo Q3

Juno XXS Duo Q4

Juno XS Q3

Juno XS Q4


Jupiter XS Q3-Q4

Jovis XXS Q3

Jovis XXS Q4

Janus XXS Q3-Q4

Eros XS TR Q3-Q4

 When manipulating the luminaire's rotation or tilt, hold it at the highlighted area and gently press it in the direction wanted. Pay attention to the lock and hinge direction.

